

Uniform Policy

RATIONALE

Please see photos for uniform expectations.

The uniform at St Luke's College is a symbol of the College community and it assists students to develop a sense of unity and belonging. Wearing a uniform encourages a sense of pride in appearance.

All our students have the right to wear this uniform and to benefit from the good reputation which the College enjoys in the local community. Each of our students also has the corresponding responsibility to wear the uniform correctly and neatly and to behave in such a way that the community respect for the College is enhanced. As well as at school, uniform must be worn coming to and going home from the College or when representing the College.



UNIFORM

SPORTS

Girls

- College culottes in plain green
- College green blouse
- College white socks (with stripe)
- College jacket (for winter)

- Black lace up shoes

Boys

- Grey school shorts
- College green shirt
- College grey socks (with stripe)
- College jacket (for winter)

- Black lace up shoes

Girls and Boys

- House polo shirt
- Black College shorts
- Sports shoes (skate shoes are not permitted)
- Ankle socks
- College hat (must be worn for all outdoor activities)
- College bathers

Please note:

- Skirt hem is to be no more than 5cm above the top of the knee.
- All buttons on shirts and blouses must be fastened.
- During the winter only College jackets can be worn to and from school.
- Shoes must be a black leather lace up school dress shoe, not jogger or boot style, no platforms / high heels / buckles / steel plates, leather Vans, pumps or skate shoes. Shoes must be similar to the type shown in the school diary. Students will not be permitted to participate in Manual Arts, Home Economics or Science classes if they are wearing inappropriate footwear.
- Only the College hat can be worn when a student is wearing the school uniform
- No other garment shall be visible beneath the uniform.
- The College school bag and College sports bag is compulsory.
- The hat is part of the compulsory uniform. St Luke's College hat must be used in all unshaded areas. It is compulsory to wear the College hat if playing on the sports areas. We also recommend students wear sunglasses outside. Hats and sunglasses must not be worn inside the buildings.

Student Workplace Uniform Expectations

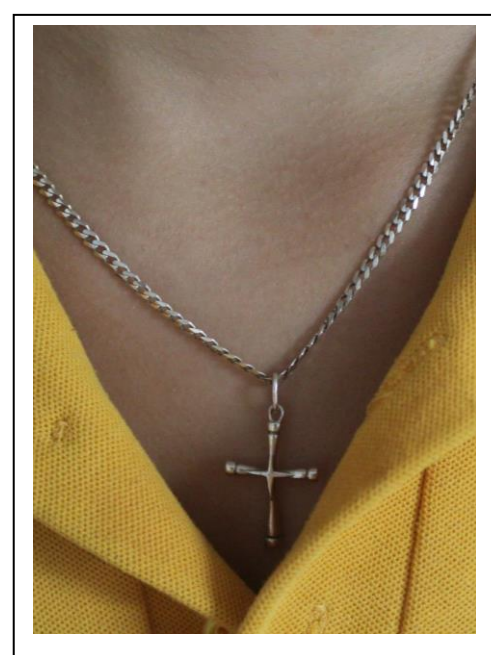
Students on the School Based Traineeship programs are to wear the nominated work uniform at all times in a neat and tidy manner. Shirts are to be tucked into pants and shirt sleeves are not to be rolled up. Safety boots must be worn where required.

Year 12 Leavers Uniform

On Fridays Year 12 students are permitted to wear their leavers' shirt, College sports shorts and sports shoes (skate shoes are not permitted).

EXPECTATIONS

Please see photos for further clarification of uniform expectations.



Uniform and Appearance

College Standards for Grooming for Students

Students are expected to be well groomed and to have a sense of pride in their appearance. College uniform expectations apply to all students when travelling to and from school, during school hours and for designated school functions.

Students are expected to look clean, neat and tidy.

- Hair must be one natural colour only. Extremes in hair colour and styles are not acceptable. Students with extremes of hair colour and/or style will be sent home to remedy the situation.
- No dreadlocks, mohawks, mullets or coloured beads are permitted.
- Excessively short hair is not permitted - a cut shorter than a number two is unacceptable. Hair must be clean, brushed and kept off the face.
- If hair is longer than the top of the collar, all hair must be completely tied back with a ribbon, scrunchies or elastic band only in school colour/s (green/brown/black).
- If a headband is worn it should be black or brown in colour in a narrow sizing (see photo). Make-up and nail polish shall not be worn to school.
- Facial hair - students shall be clean shaven.
- Visible tattoos are not permitted.

The Principal is the final arbitrator on issues of uniform and grooming.

- Students riding bikes or scooters to school are required to wear a bike helmet in an appropriate manner.
- Students driving to school must complete a form and have permission from the Deputy Principal.

Permitted Accessories

- One simple FLAT ring.
- One fine neck chain (only a single Christian symbol may be added to the chain - optional).
- One watch.
- No bracelets, fundraising bands or anklets are to be worn.
- A maximum of two PLAIN silver or gold (only) small stud or sleeper per ear lobe.
- Additional body piercing or "taping over" is not permitted (including additional plastic studs).
- A plain black belt.
- Bags are not to be carried to lessons or around the school. Bags should be left in the student's locker.
- A sports bag for Physical Education lessons are permitted.
- St Luke's hat (outdoors only), other types are not permitted.

Management Procedure

Students with a valid reason for not wearing the correct uniform shall:

- Bring a NOTE to school signed by a parent and then have the note signed by their House Coordinator. The note is to indicate the period of time for which the reason is valid.
- Receipt of a uniform infringement. 3 uniform infringements (a term) = 2x lunch detentions (Tuesday and Thursday).
- Graffiti is not permitted on College uniform items or on the student diary.
- Uniform items are available at the College Uniform Shop. Please refer to the College website for opening days and times. All uniform items should be clearly labelled.

